

1

Eye Level - Mesh Only



2

Eye Level - w/Texture and Color



IDS SCULPTURE

PLAY. CLIMB. EXPLORE.

Railroad Climber

2 Car

SC215-2

Age Group: 5-12

100% CONSTRUCTION DRAWINGS

All IDS projects are designed to meet or exceed ASTM 1487. Please consult ASTM 1487 for required hazard warning and signage specifications. Not all equipment may be appropriate for all children. Supervision is required. ASTM compliant safety surfacing is required under and around all play equipment. The Americans with Disabilities Act (ADA) may require your play area to be accessible, please consult with an ADA professional to ensure compliance.

Date **1/17/2025**

Sheet # **A.01.1**

Drawing Title
Perspectives

Approved By / Date:



591 South Boulevard Street
Gunnison, Colorado 81230
info@idsculpture.com



3

Eye Level - Mesh Only



4

Eye Level - w/Texture and Color



IDS SCULPTURE

PLAY. CLIMB. EXPLORE.

Railroad Climber

2 Car

SC215-2

Age Group: 5-12

100% CONSTRUCTION DRAWINGS

All IDS projects are designed to meet or exceed ASTM 1487. Please consult ASTM 1487 for required hazard warning and signage specifications. Not all equipment may be appropriate for all children. Supervision is required.

ASTM compliant safety surfacing is required under and around all play equipment. The Americans with Disabilities Act (ADA) may require your play area to be accessible, please consult with an ADA professional to ensure compliance.

Date **1/17/2025**

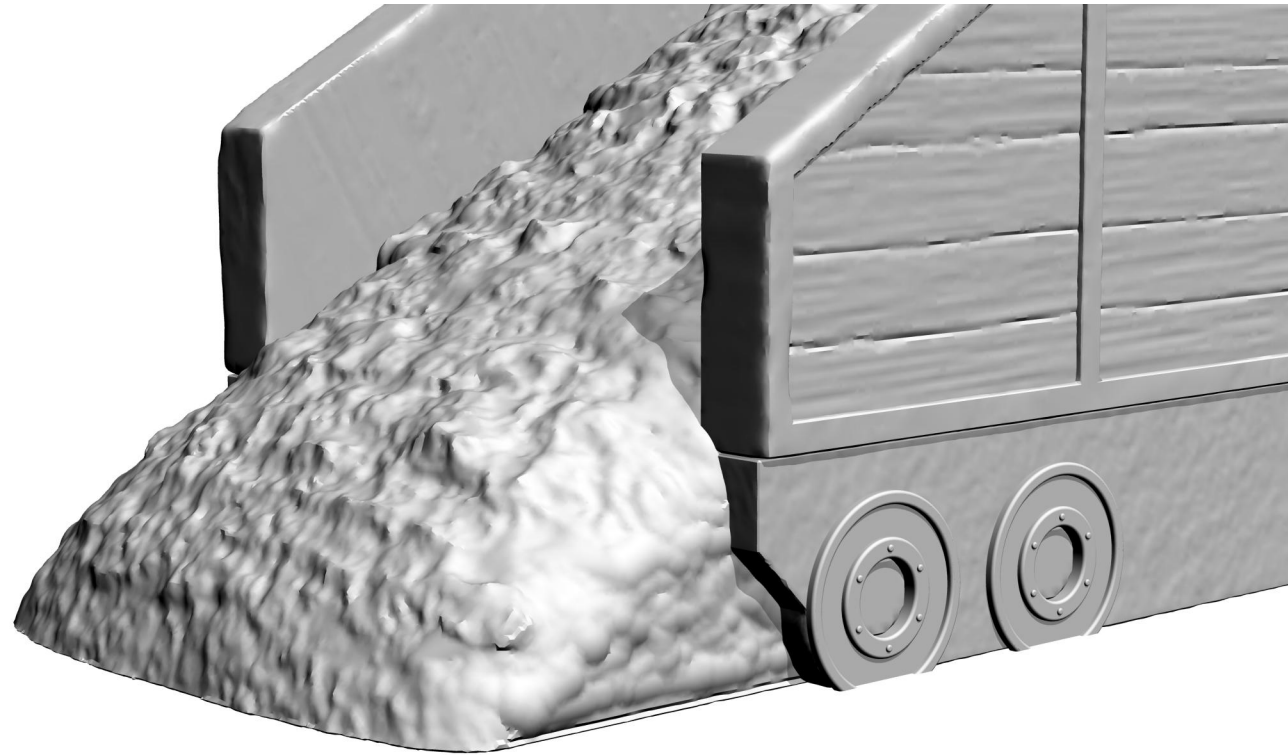
Sheet # **A.01.2**

Drawing Title
Perspectives

Approved By / Date:

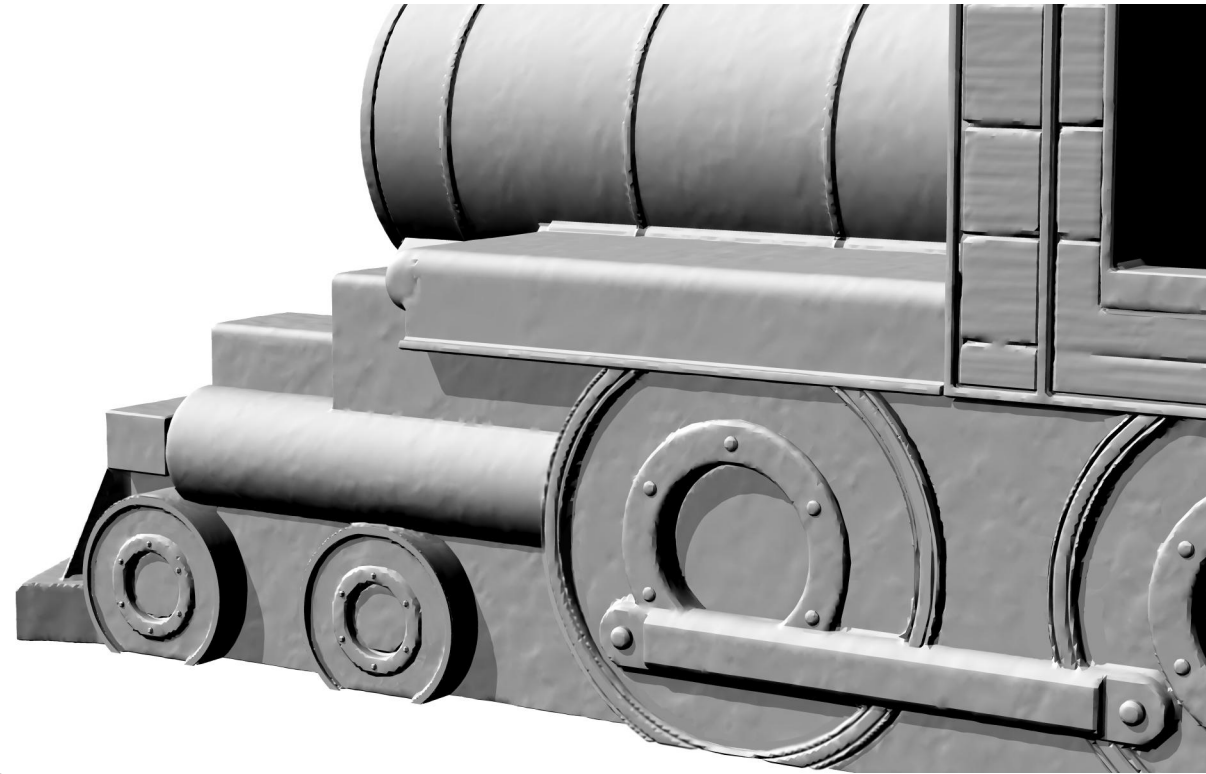


591 South Boulevard Street
Gunnison, Colorado 81230
info@idsculpture.com



5

Detail - Mesh Only



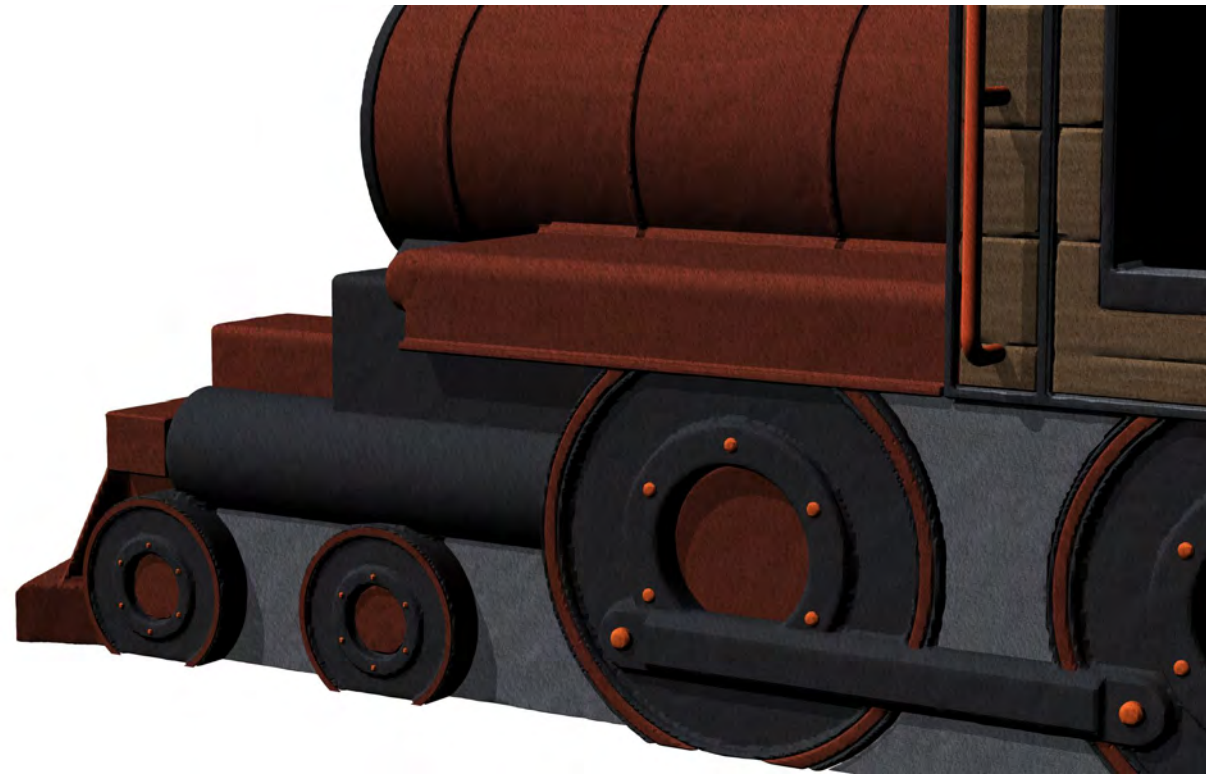
7

Detail - Mesh Only



6

Detail - w/Texture and Color



8

Detail - w/Texture and Color



IDS SCULPTURE

PLAY. CLIMB. EXPLORE.

Railroad Climber

2 Car

SC215-2

Age Group: 5-12

100% CONSTRUCTION DRAWINGS

All IDS projects are designed to meet or exceed ASTM 1487. Please consult ASTM 1487 for required hazard warning and signage specifications. Not all equipment may be appropriate for all children. Supervision is required. ASTM compliant safety surfacing is required under and around all play equipment. The Americans with Disabilities Act (ADA) may require your play area to be accessible, please consult with an ADA professional to ensure compliance.

Date **1/17/2025**

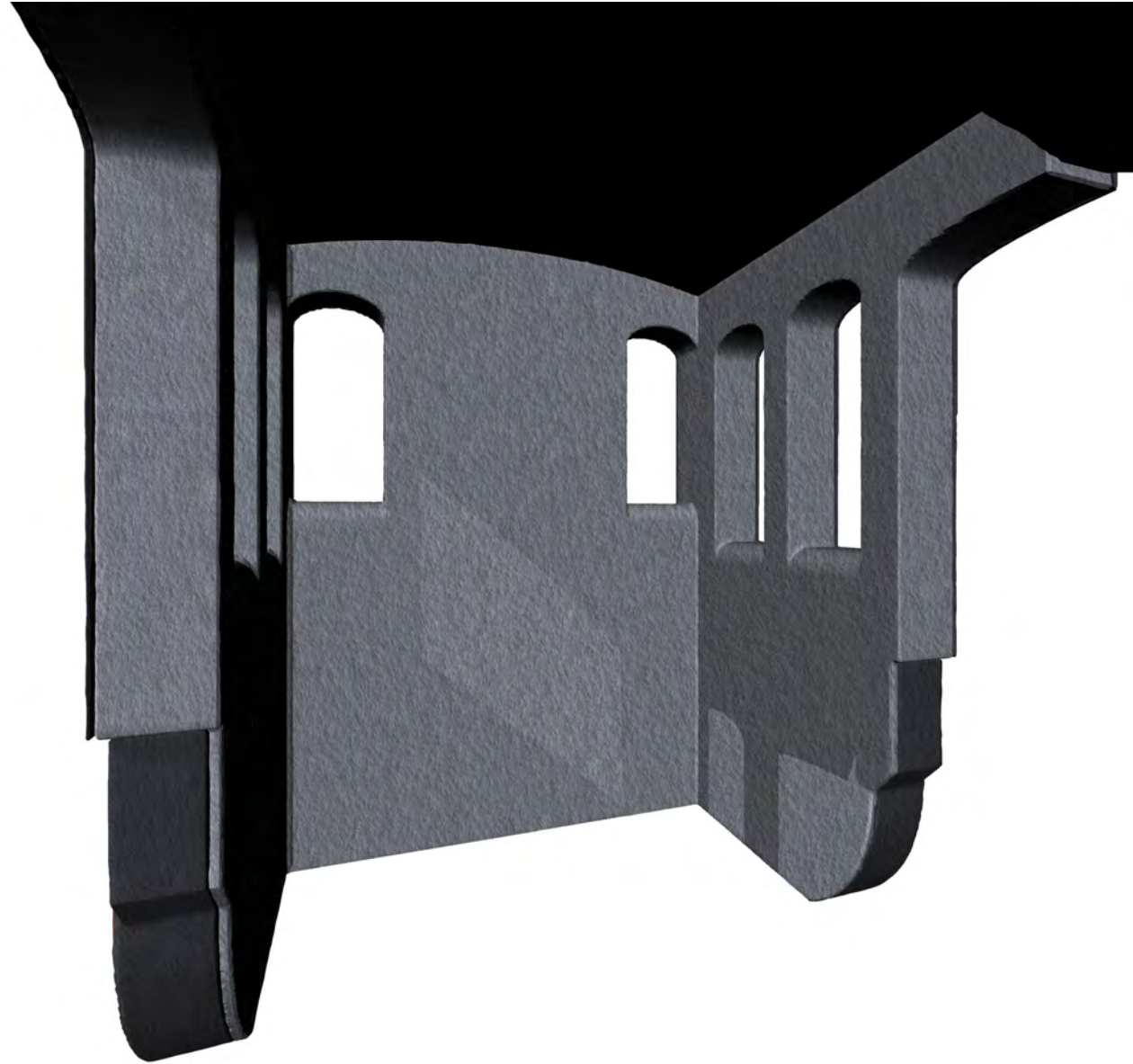
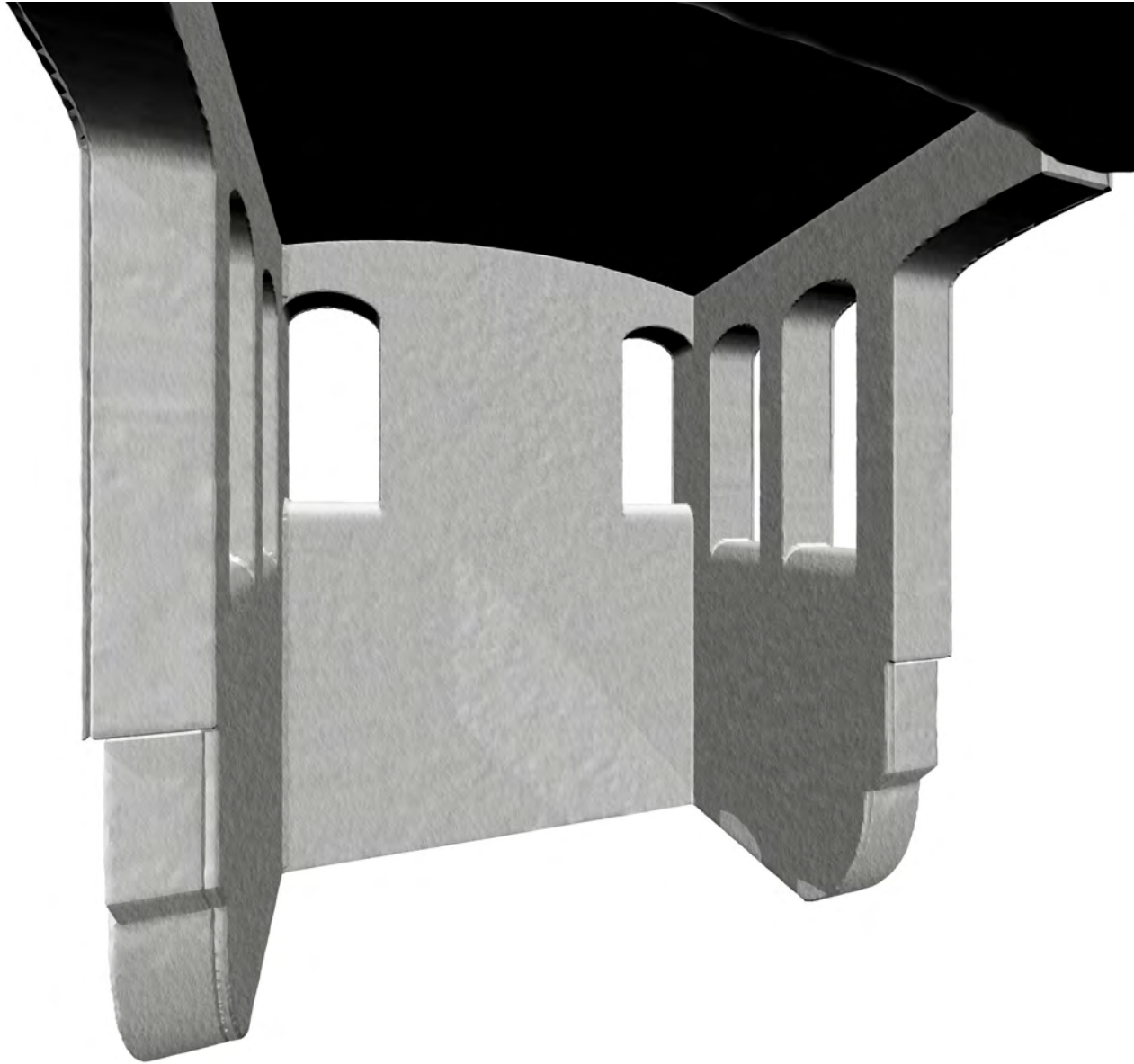
Sheet # **A.01.3**

Drawing Title
Perspectives

Approved By / Date:



591 South Boulevard Street
Gunnison, Colorado 81230
info@idsculpture.com



9

Interior - Mesh Only

10

Interior - w/Texture and Color



ID SCULPTURE

PLAY. CLIMB. EXPLORE.

Railroad Climber

2 Car

SC215-2

Age Group: 5-12

100% CONSTRUCTION DRAWINGS

All IDS projects are designed to meet or exceed ASTM 1487. Please consult ASTM 1487 for required hazard warning and signage specifications. Not all equipment may be appropriate for all children. Supervision is required.

ASTM compliant safety surfacing is required under and around all play equipment. The Americans with Disabilities Act (ADA) may require your play area to be accessible, please consult with an ADA professional to ensure compliance.

Date **1/17/2025**

Sheet # **A.01.4**

Drawing Title
Perspectives

Approved By / Date:



IDS

591 South Boulevard Street
Gunnison, Colorado 81230
info@idsculpture.com

Railroad Climber

2 Car
SC215-2

Age Group: 5-12

100% CONSTRUCTION DRAWINGS

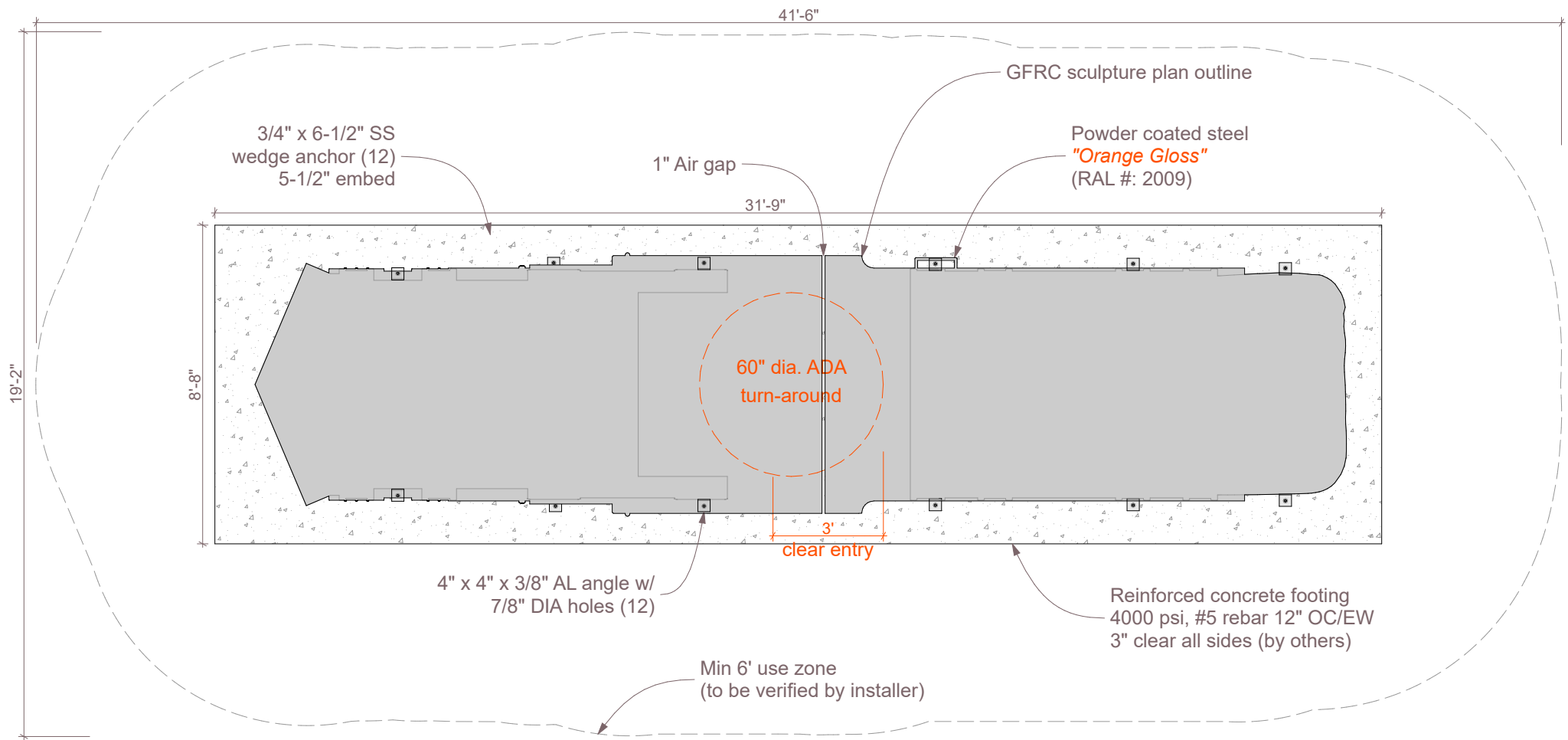
All IDS projects are designed to meet or exceed ASTM 1487. Please consult ASTM 1487 for required hazard warning and signage specifications. Not all equipment may be appropriate for all children. Supervision is required. ASTM compliant safety surfacing is required under and around all play equipment. The Americans with Disabilities Act (ADA) may require your play area to be accesible, please consult with an ADA professional to ensure compliance.

Date1/17/2025

Sheet #A.01.5

Drawing TitleLayout

Approved By / Date:



Railroad Climber

2 Car
SC215-2

Age Group: 5-12

100% CONSTRUCTION DRAWINGS

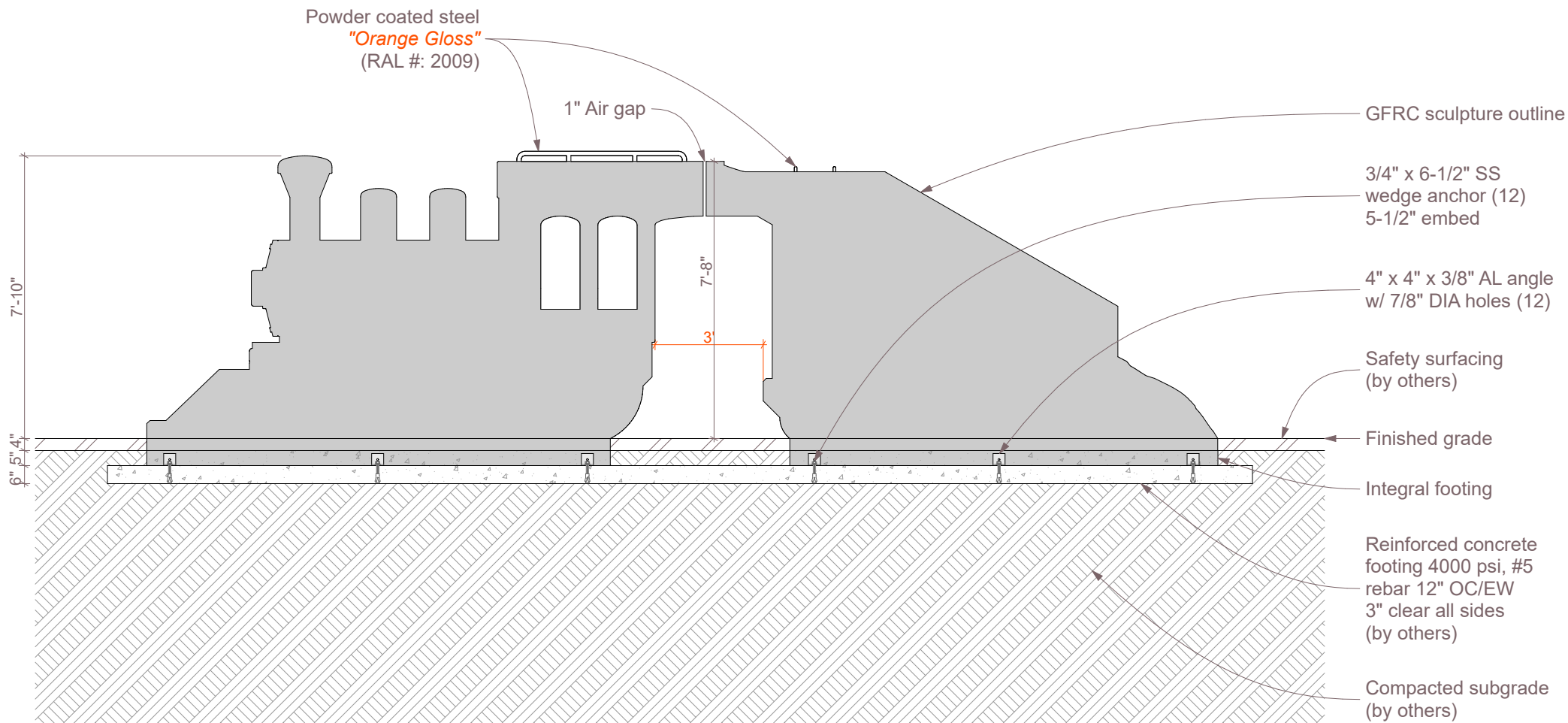
All IDS projects are designed to meet or exceed ASTM 1487. Please consult ASTM 1487 for required hazard warning and signage specifications. Not all equipment may be appropriate for all children. Supervision is required. ASTM compliant safety surfacing is required under and around all play equipment. The Americans with Disabilities Act (ADA) may require your play area to be accesible, please consult with an ADA professional to ensure compliance.

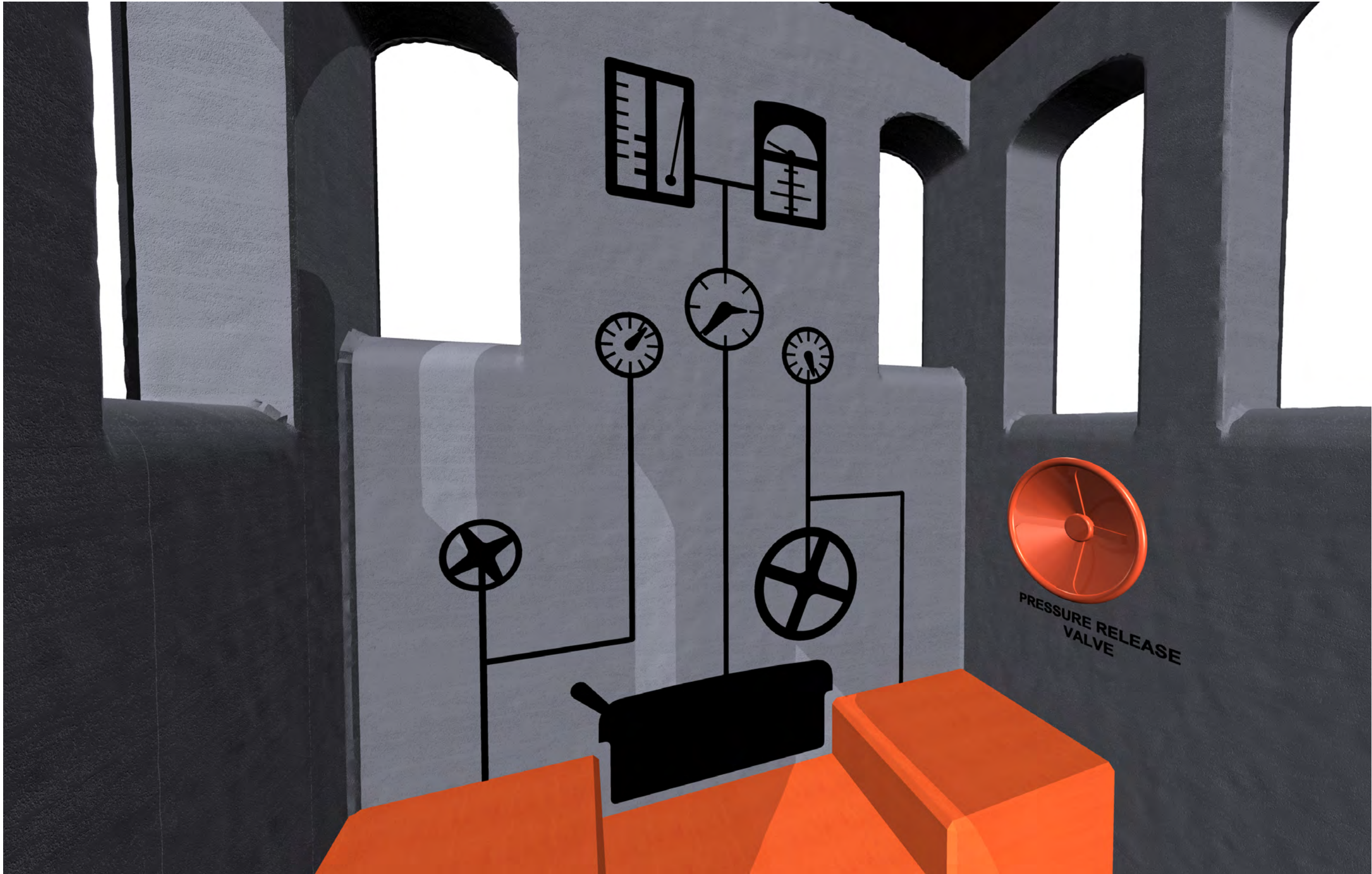
Date1/17/2025

Sheet #A.01.6

Drawing TitleSection

Approved By / Date:





Railroad Climber

2 Car
SC215-2

Age Group: 5-12

100% CONSTRUCTION DRAWINGS

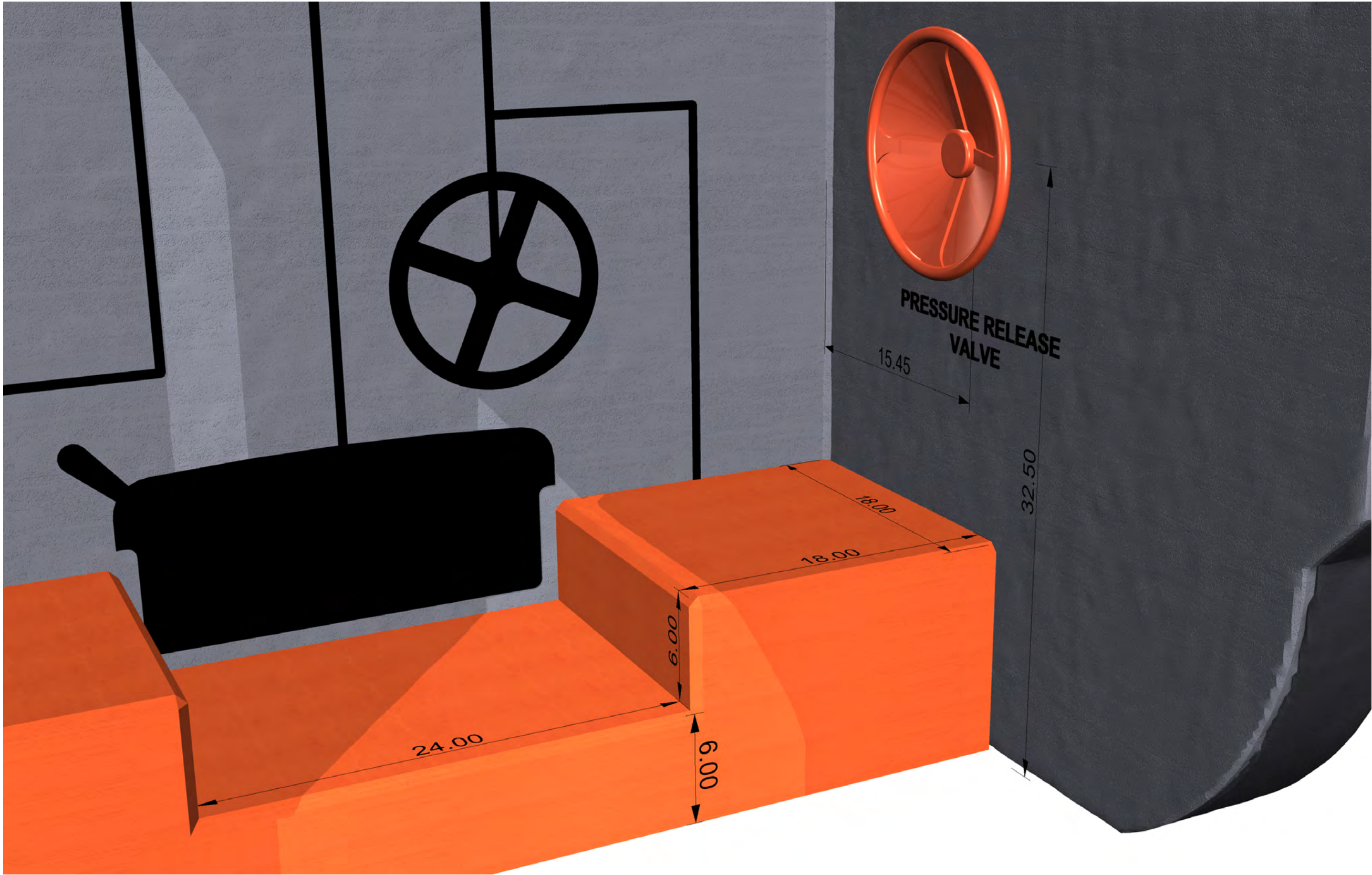
All IDS projects are designed to meet or exceed ASTM 1487. Please consult ASTM 1487 for required hazard warning and signage specifications. Not all equipment may be appropriate for all children. Supervision is required. ASTM compliant safety surfacing is required under and around all play equipment. The Americans with Disabilities Act (ADA) may require your play area to be accessible, please consult with an ADA professional to ensure compliance.

Date **1/17/2025**

Sheet # **A.01.7**

Drawing Title
Detail

Approved By / Date:



Railroad Climber

2 Car
SC215-2

Age Group: 5-12

100% CONSTRUCTION DRAWINGS

All IDS projects are designed to meet or exceed ASTM 1487. Please consult ASTM 1487 for required hazard warning and signage specifications. Not all equipment may be appropriate for all children. Supervision is required. ASTM compliant safety surfacing is required under and around all play equipment. The Americans with Disabilities Act (ADA) may require your play area to be accessible, please consult with an ADA professional to ensure compliance.

Date	1/17/2025
Sheet #	A.01.8
Drawing Title	Detail
Approved By / Date:	